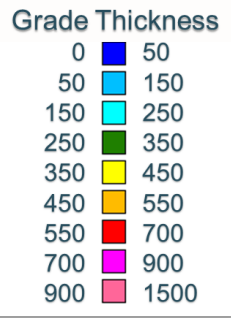
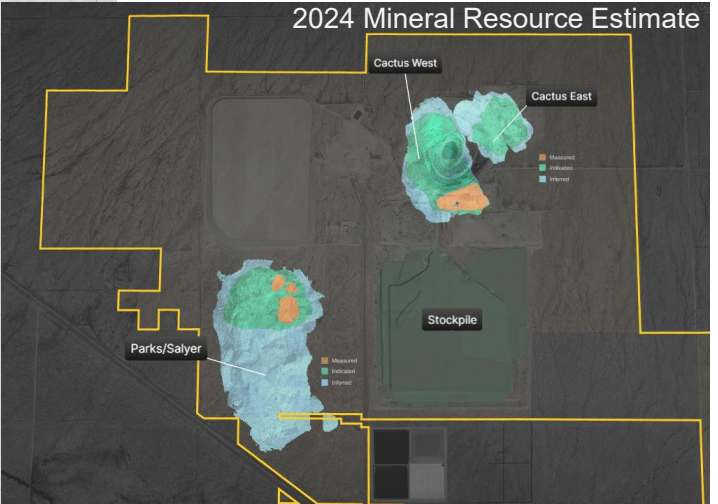
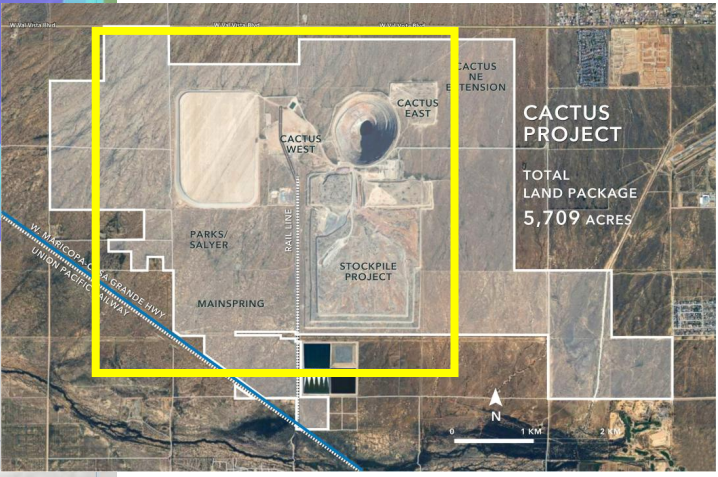
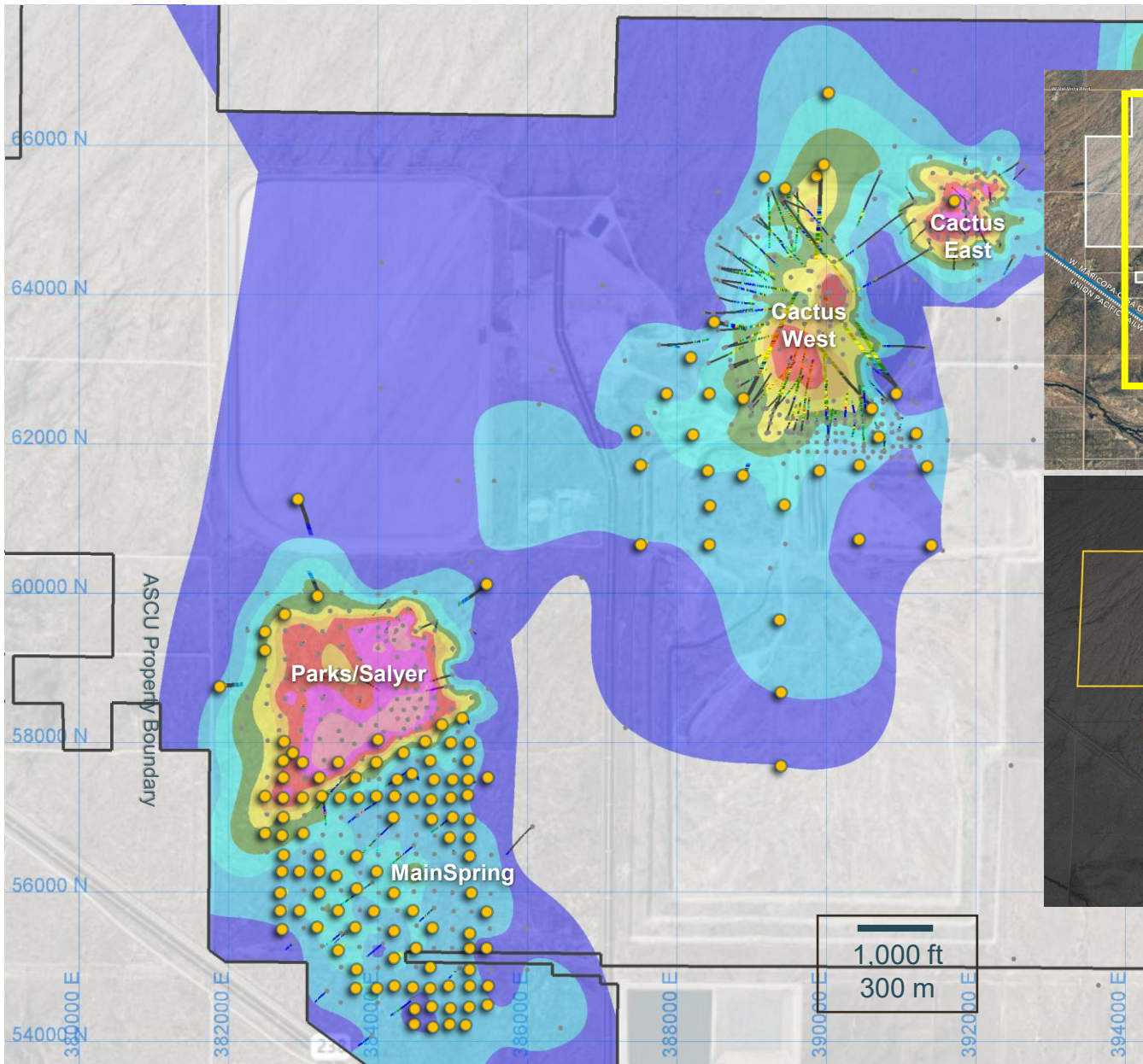


2025 Cactus Project Drill Program Plan View *August 27, 2025*



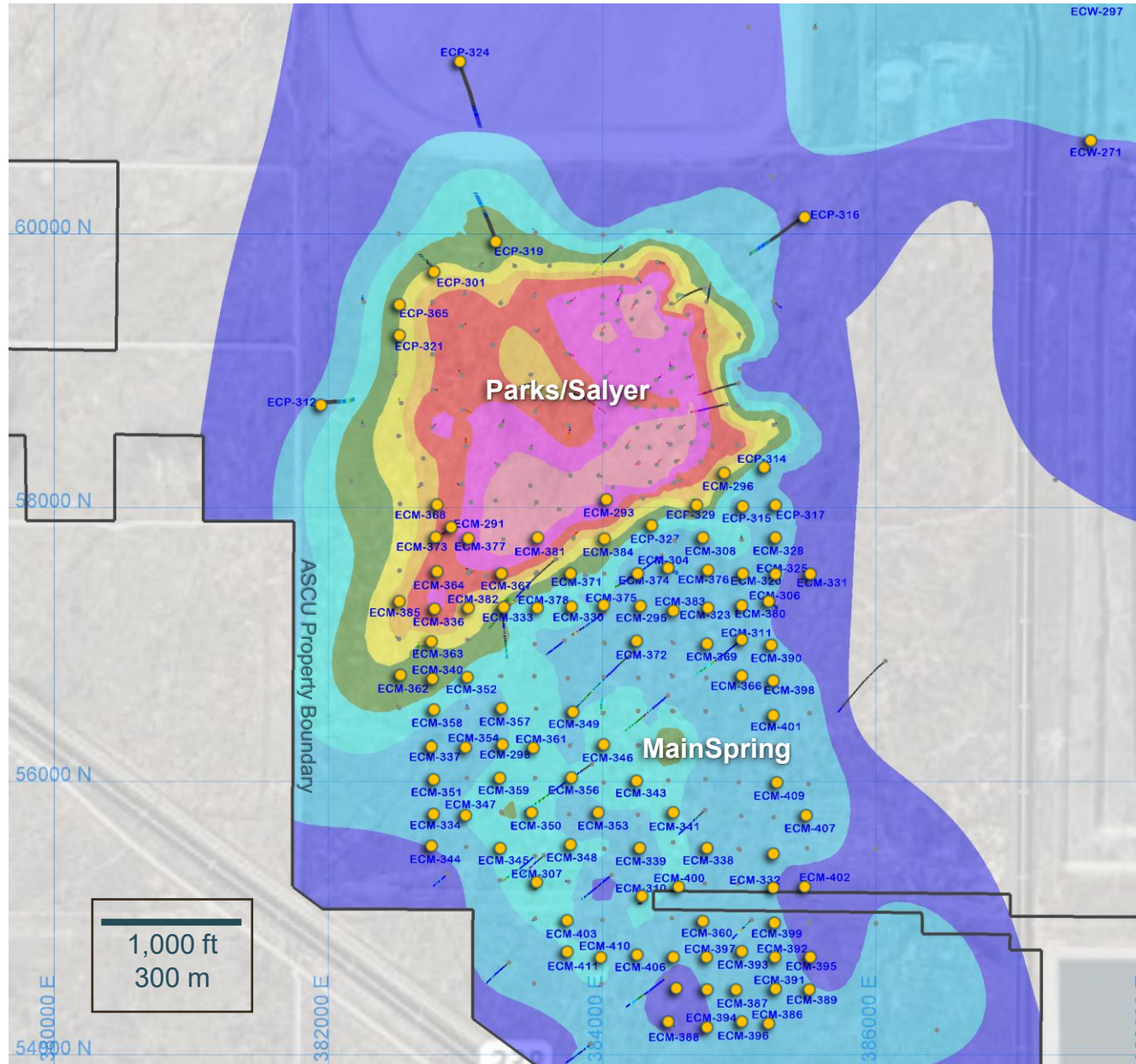
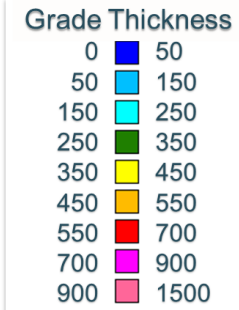
- August 27, 2025 PR
- Previously Released

Grade Thickness = CuT % x Vertical Thickness (ft)
Grade thickness calculations include the entire assayed mineralization package down hole
No grade cutoffs or grade capping has been applied



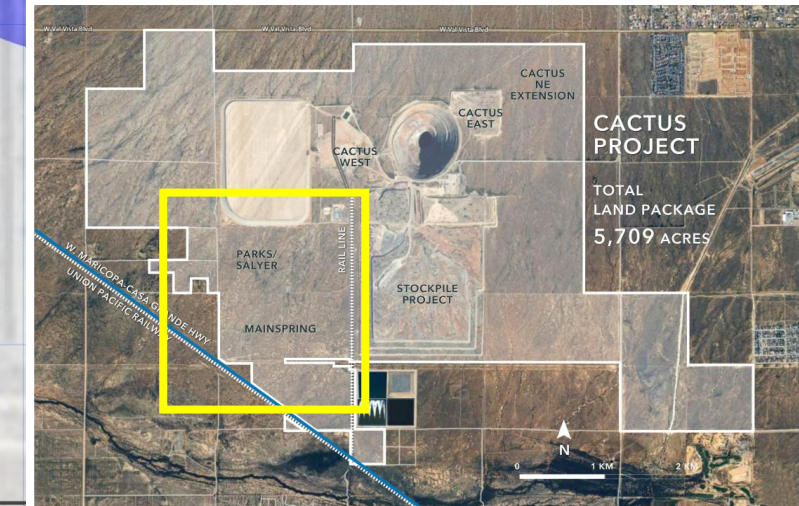
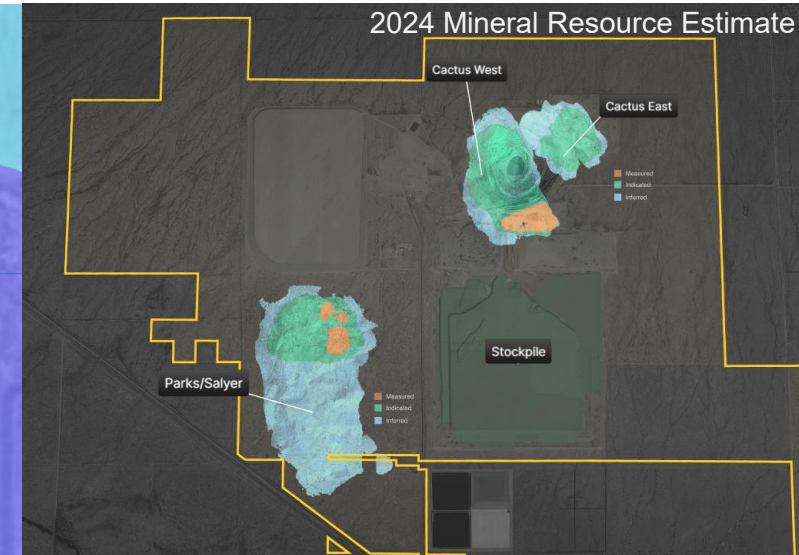
For more information on the current MRE for the Cactus Project (including related technical notes), refer to the Company's Annual Information Form dated March 27, 2025, available under its issuer profile at www.sedarplus.ca or on its website at www.arizonasonoran.com.

Parks/Salyer Infill to Indicated Drill Program Plan View *August 27, 2025*



- August 27, 2025 PR
- Previously Released

Grade Thickness = CuT % x
Vertical Thickness (ft)
Grade thickness calculations
include the entire assayed
mineralization package down hole
No grade cutoffs or grade capping
has been applied

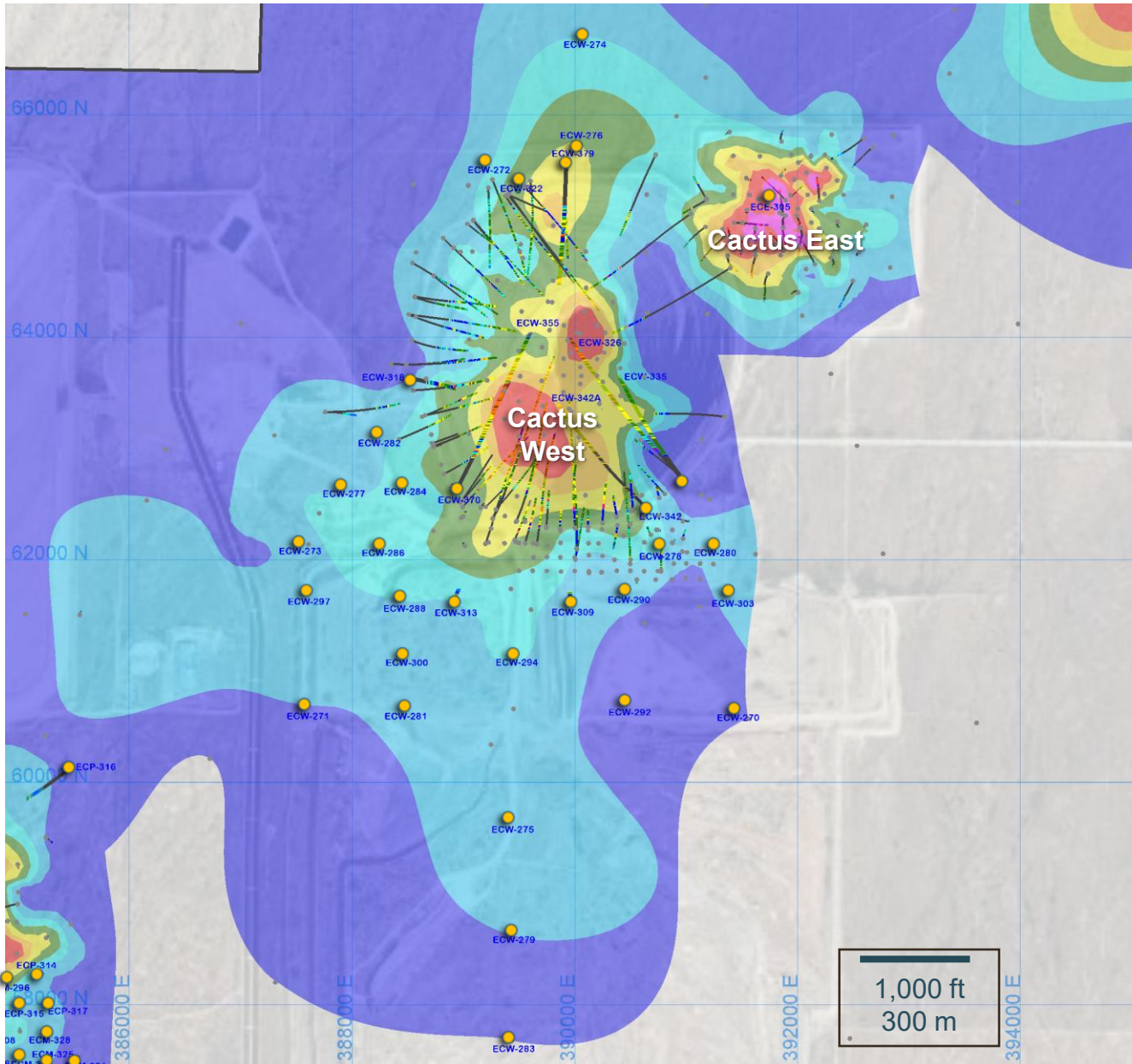


For more information on the current MRE for the Cactus Project (including related technical notes), refer to the Company's Annual Information Form dated March 27, 2025, available under its issuer profile at www.sedarplus.ca or on its website at www.arizonasonoran.com.

Cactus Step Out Drill Program Plan View August 27, 2025

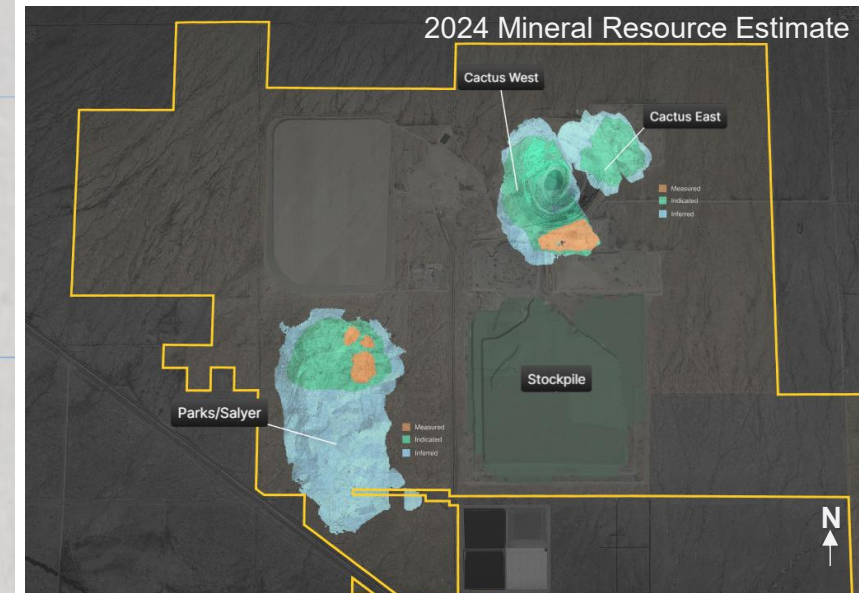
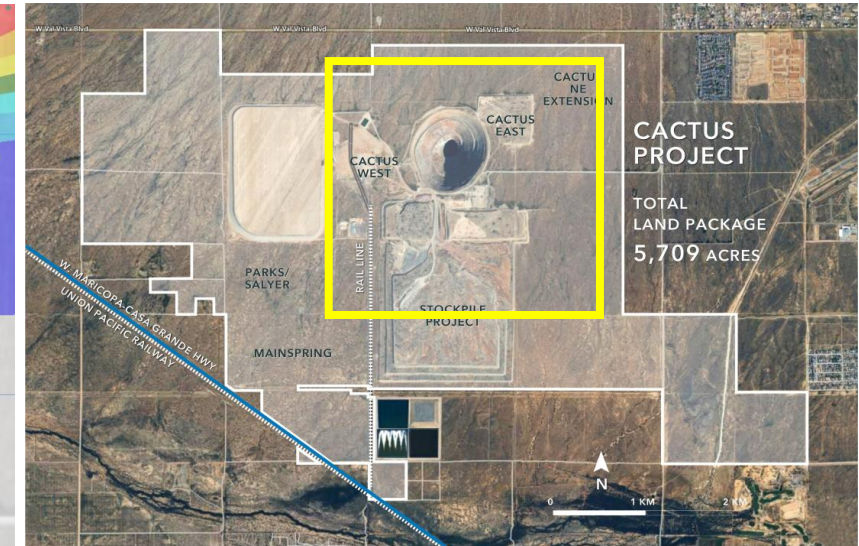
Grade Thickness

0	50
50	150
150	250
250	350
350	450
450	550
550	700
700	900
900	1500



- August 27, 2025 PR
- Previously Released

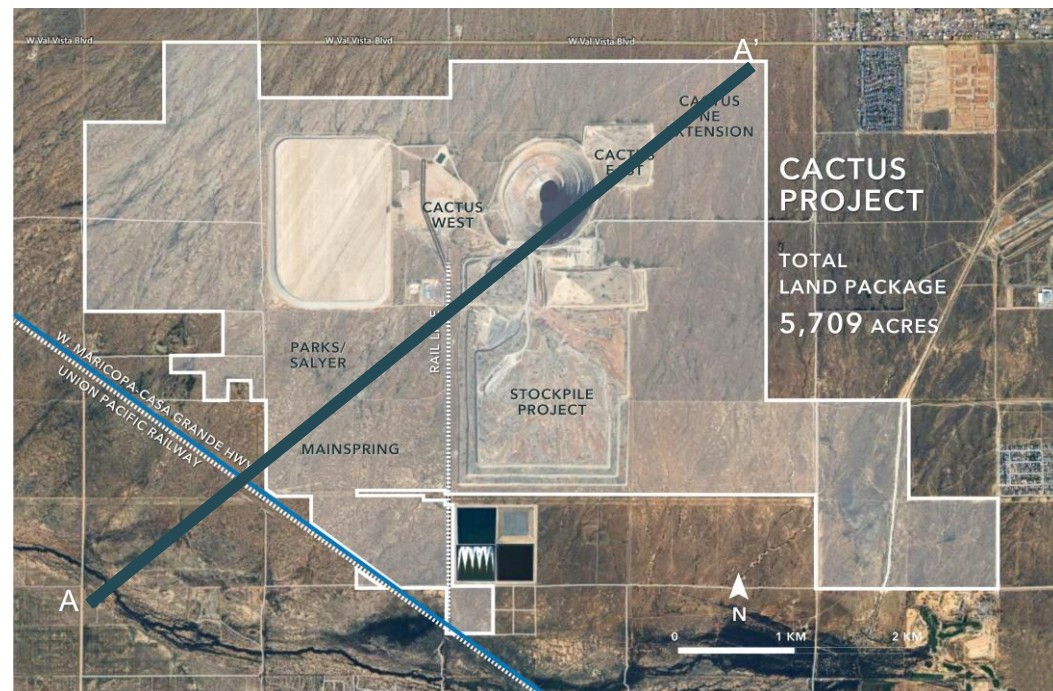
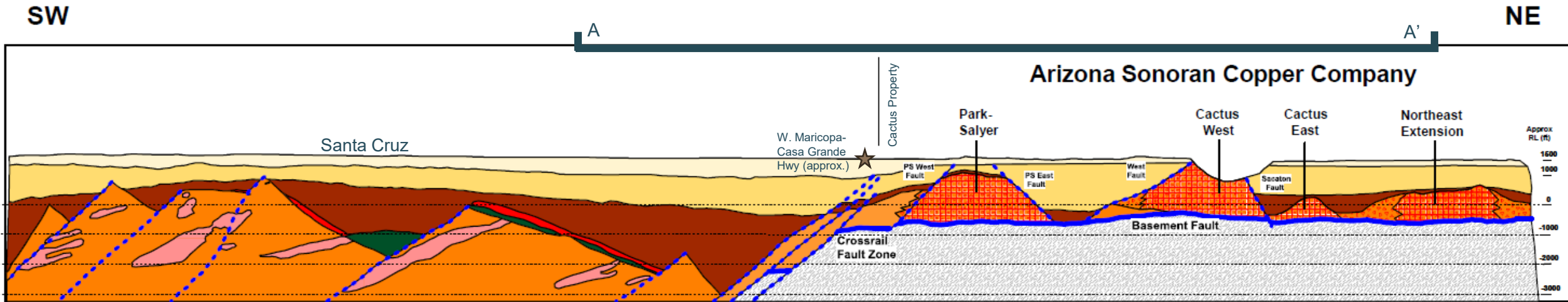
Grade Thickness =
CuT % x Vertical
Thickness (ft)
Grade thickness
calculations include
the entire assayed
package down hole
No grade cutoffs or
grade capping has
been applied



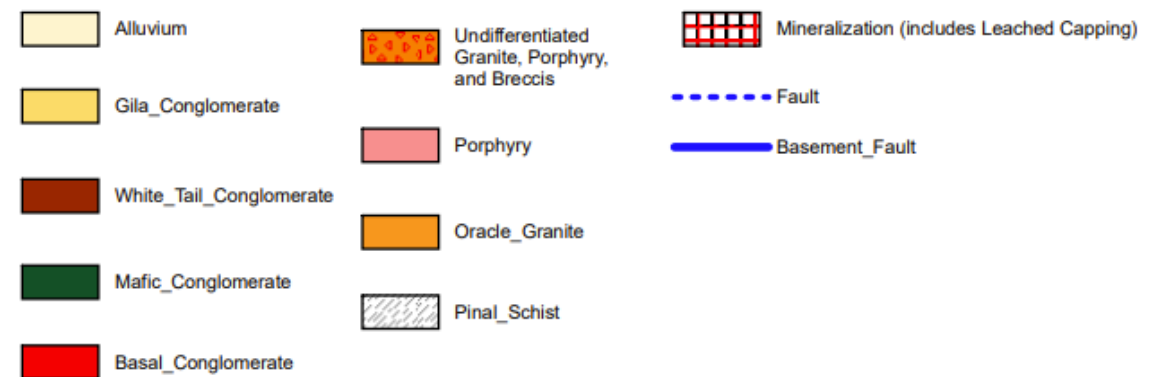
For more information on the current MRE for the Cactus Project (including related technical notes), refer to the Company's Annual Information Form dated March 27, 2025, available under its issuer profile at www.sedarplus.ca or on its website at www.arizonasonoran.com.
ASCU-TSX | ASCUF-OTCQX ARIZONASONORAN.COM

Cactus and the Casa Grande District Schematic Long Section August 27, 2025

4



Scale = 0.5 miles



For more information on the current MRE for the Cactus Project (including related technical notes), refer to the Company's Annual Information Form dated March 27, 2025, available under its issuer profile at www.sedarplus.ca or on its website at www.arizonasonoran.com.

ASCU:TSX | ASCUF:OTCQX ARIZONASONORAN.COM